

Residence in Livadia / PALY architects



Curated by Matheus Pereira

Share

HOUSES • LIVADIA, GREECE

Architects: [PALY architects](#)

Area: 216 m²

Year: 2019

Photographs: [George Anastasakis](#)

Manufacturers: [Caneplex](#), [Daikin](#), [Inalco](#), BO CONCEPT, BRIGHT, Exalco, Home deco, KOURASSANIT, Kitchen Gallery, Kostis lighting, Nicolazzi

MORE SPECS

Save

Home

Projects

Products

Folders

Feed



Save

Text description provided by the architects. Leaning on the rock of the mountain, adapted to the landscape and

Save

hour road from Chania.



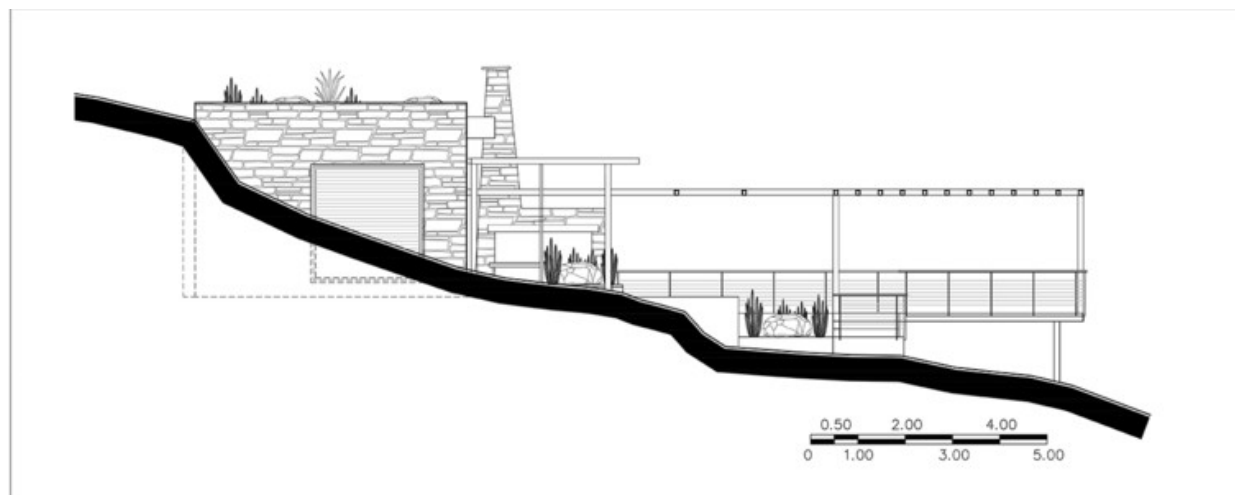
The plot is near a ridge (Cape Koutoulas) on rocky ground and wild landscape. North is to the ridge, views and sea to the south and southwest. Big natural rocks project to the west and the mainland with olive trees, small hills and sloppy grounds on the east. Two clean volumes, one with the living room, kitchen, dining room and one with the bedrooms, connected via a protected cross-bright semi-outdoor living space on the north-south direction, starting from the rock, ending on a raised platform suspended between mountain and sea, sky and earth.

Save



A long water element, created alongside the residence's main spaces, also being the boundary to the steep slope, the view, the sea. The synthesis complete pergolas and shutters from metal and wood. The challenge was adapting the building on the environment, with a non-provocative way and creating the smallest possible "wound" on the mountain. The synthesis consists of a one storey elongated rectangular parallelepiped hugged by a shape Γ stonewall on the north and west, with big openings, a water element and outdoor living spaces to the south.

[Save](#)



The stonewall-boundary of the mountain, that continuous onto the flat roof in a continuation of the natural ground. Basic synthetic element, the intermediate space between indoor-outdoor spaces, “the shelter”. Big sliding windows on the living room unify indoor and outdoor space creating a big covered with pergola living space, which unify with the semi-outdoor space.

Save



The biggest problem of the construction was the long distance from the material supply spots and the rugged area. Access until the entrance, privacy with independent rooms with bathrooms, shading and protecting from the sun and wind alongside with the view, possibility of preparing a meal inside and outside, the long water element for sport swimming, complete privacy, peace and redefinition of the human-nature relationship were the issues of the strategy. It is a conventional construction from reinforced concrete, brick walls and local stone, internal walls from cement board.

[Save](#)



Internal and external flooring from big size tiles with stone texture on the environments earthy colour. The flat roofs are from visible uncoated concrete and the rest external flooring from local stone. Pergolas made from metal on the colour of rust, with irregular chestnut logs on top. Light dividers from wicker. All the external surfaces made from Kourasani (mortar) with straw on the rocky environment colour. Materials chosen for endurance on the weather conditions of the area, solar panels for hot water.

[Save](#)



The specialized exterior plaster, kourasani, the rusty metals, the thermal insulating frames and glass for the high summer temperatures and the other materials used do not require special maintenance and are durable to the local weather conditions. The visible uncoated concrete, the clay on the colour of soil on the exterior walls, the kourasanit on the colour of sand on the interior walls, the rusty metals, the crooked wood on pergolas and the natural dry stone are the basic materials of the villa. The planting like a continuation of the mountain on the roof of the villa, and on the exterior spaces.

[Save](#)




Project gallery


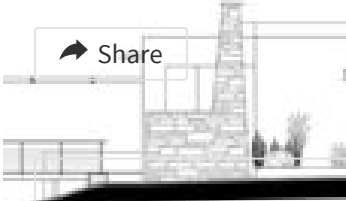


Save



Save

 Share



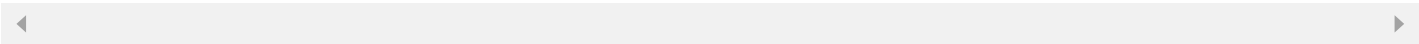
About this office

PALY architects
Office

FOLLOW

PRODUCTS

- Stone
- Concrete



#TAGS

- Projects
- Built Projects
- Selected Projects
- Residential Architecture
- Houses
- Mies Van Der Rohe



Published on February 12, 2021

Save



Save

Save