



Sumit Singhal

Sumit Singhal loves modern architecture. He comes from a family of builders who have built more than 20 projects in the last ten years near Delhi in India. He has recently started writing about the architectural projects that catch his imagination.

Legacy Suites - The Garden All Day Bar in Mykonos, Greece by PALY architects

Share

Tweet

March 6th, 2020 by Sumit Singhal

Article source: *PALY architects*

Legacy

Just outside the town of Mykonos, having the existing old residence of the famous violinist Yehudi Menuhin as a core, a small hotel with fully equipped suites was created. This core was expanded and modified with all the internal and external surrounding spaces completely reconstructed.

The plot has a large slope and oversees the beach of Magali Ammos.

The variety of alternative paths and different accesses to the rooms create different viewpoints to the sea and the land sections of the island.

Materials: Hand brushed plaster on exterior walls, cement plaster on the internal walls and bathrooms, natural stone flooring, wood in natural color pergolas, stabilized ceramic floor and natural pebbles floorings outdoors.

Particular emphasis was given to the indoor and outdoor furnishing and lighting.

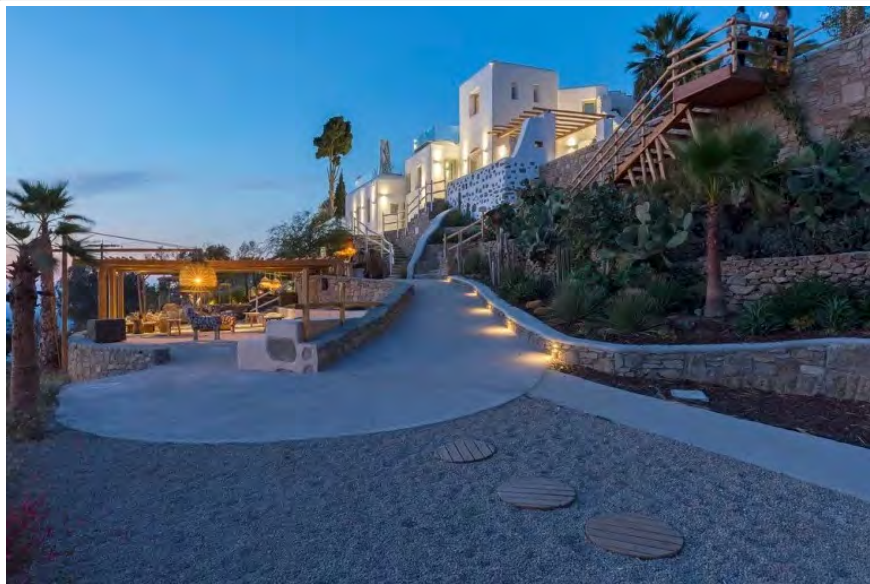


Image Courtesy © Panagiotis Voumvakis and Kostas Kapareliotis

- **Architects:** [PALY architects](#) (Nikos Lykoudis, Ismene Papaspiliopoulou)
- **Project:** Legacy Suites – The Garden All Day Bar
- **Location:** Mykonos, Greece
- **Photography:** Panagiotis Voumvakis, Kostas Kapareliotis
- **Collaborators, Consultants:** Eleytheria Chatzi, Konstantinos Platyrachos, Elina Foutsitzoglou
- **Completion Year:** 2018



Image Courtesy © Panagiotis Voumvakis and Kostas Kapareliotis

The Garden

Distinct stairs and ramps lead to the lower levels of the plot, where a new all-day bar-restaurant was created, offering a great view to the sea and the sunset. Alleys, berms, the combination of different pergolas, a small swimming pool, an outdoor bar, a small scale open space theater, wooden platforms-viewpoints, a mixed style seating area, the emphasis and the enhancement of the already existing vegetation are some of the design components.

Aromatic plants of the nearby countryside, olive trees and other trees of Mykonos were transplanted to create a special natural-relaxed environment.

Contemporary elements consistent with local architectural tradition were used aiming to create a new image that respects the natural environment.



Image Courtesy © Panagiotis Voumvakis and Kostas Kapareliotis



Image Courtesy © Panagiotis Voumvakis and Kostas Kapareliotis



Image Courtesy © Panagiotis Voumvakis and Kostas Kapareliotis



Image Courtesy © Panagiotis Voumvakis and Kostas Kapareliotis



Image Courtesy © Panagiotis Voumvakis and Kostas Kapareliotis



Image Courtesy © Panagiotis Voumvakis and Kostas Kapareliotis



Image Courtesy © Panagiotis Voumvakis and Kostas Kapareliotis



Image Courtesy © Panagiotis Voumvakis and Kostas Kapareliotis



Image Courtesy © Panagiotis Voumvakis and Kostas Kapareliotis

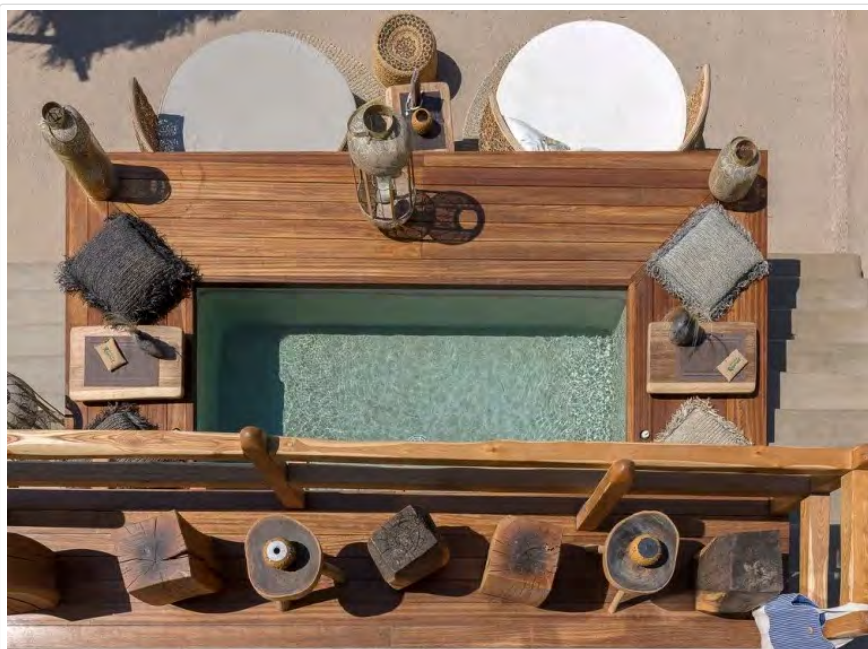


Image Courtesy © Panagiotis Voumvakis and Kostas Kapareliotis



Image Courtesy © Panagiotis Voumvakis and Kostas Kapareliotis



Image Courtesy © Panagiotis Voumvakis and Kostas Kapareliotis

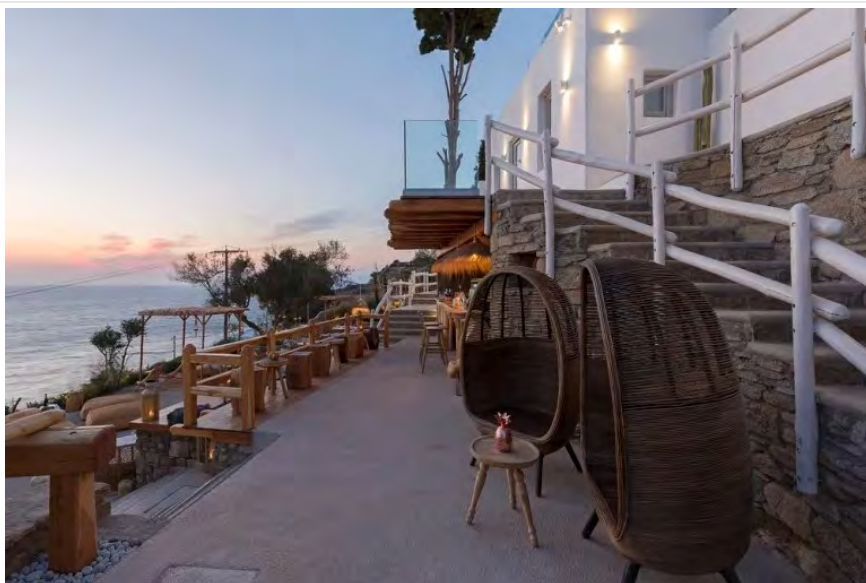


Image Courtesy © Panagiotis Voumvakis and Kostas Kapareliotis



Image Courtesy © Panagiotis Voumvakis and Kostas Kapareliotis



Image Courtesy © Panagiotis Voumvakis and Kostas Kapareliotis



Image Courtesy © Panagiotis Voumvakis and Kostas Kapareliotis



Image Courtesy © Panagiotis Voumvakis and Kostas Kapareliotis



Image Courtesy © Panagiotis Voumvakis and Kostas Kapareliotis

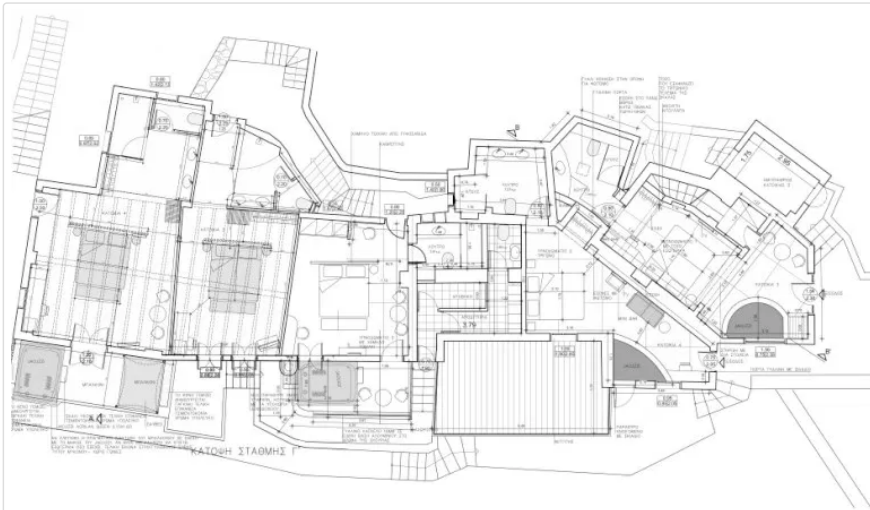


Image Courtesy © PALY architects



Image Courtesy © PALY architects

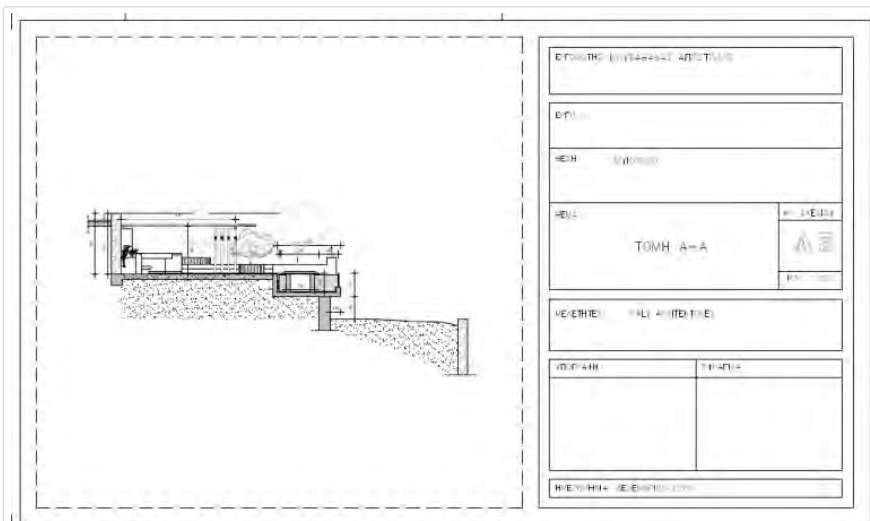


Image Courtesy © PALY architects

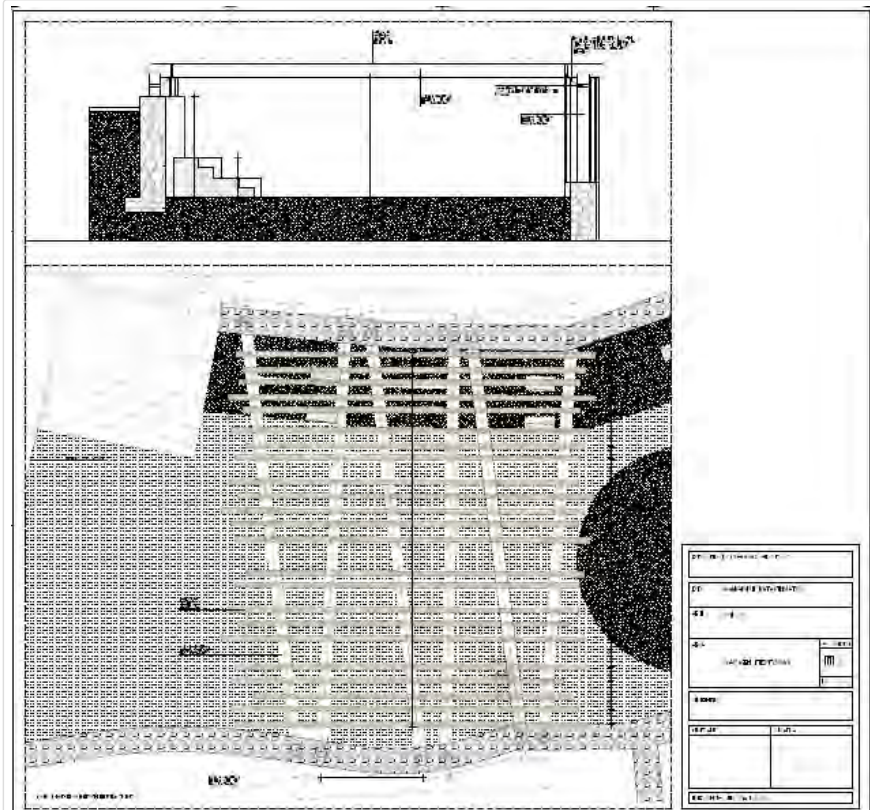


Image Courtesy © PALY architects

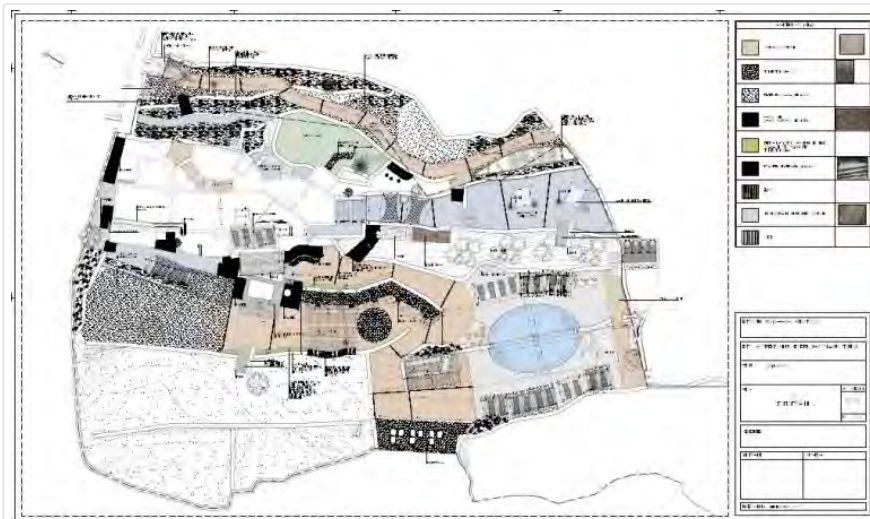


Image Courtesy © PALY architects



Image Courtesy © Panagiotis Voumvakis and Kostas Kapareliotis



Image Courtesy © Panagiotis Voumvakis and Kostas Kapareliotis



Image Courtesy © Panagiotis Voumvakis and Kostas Kapareliotis



Image Courtesy © Panagiotis Voumvakis and Kostas Kapareliotis

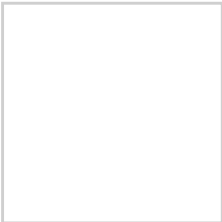


Image Courtesy © Panagiotis Voumvakis and Kostas Kapareliotis

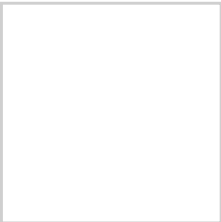


Image Courtesy © Panagiotis Voumvakis and Kostas Kapareliotis

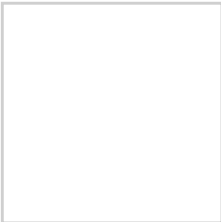


Image Courtesy © Panagiotis Voumvakis and Kostas Kapareliotis

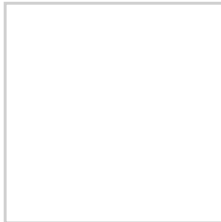


Image Courtesy © Panagiotis Voumvakis and Kostas Kapareliotis

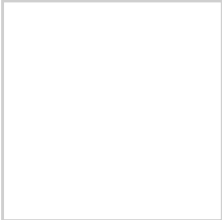


Image Courtesy © Panagiotis Voumvakis and Kostas Kapareliotis

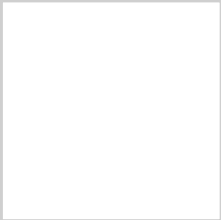


Image Courtesy © Panagiotis Voumvakis and Kostas Kapareliotis

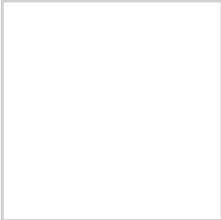


Image Courtesy © Panagiotis Voumvakis and Kostas Kapareliotis

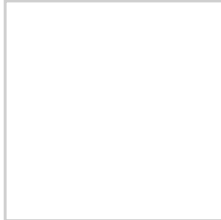


Image Courtesy © Panagiotis Voumvakis and Kostas Kapareliotis

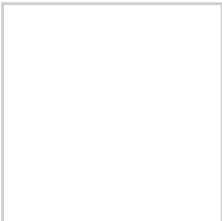


Image Courtesy © Panagiotis Voumvakis and Kostas Kapareliotis

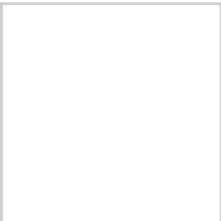


Image Courtesy © Panagiotis Voumvakis and Kostas Kapareliotis

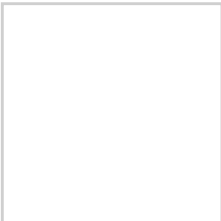


Image Courtesy © Panagiotis Voumvakis and Kostas Kapareliotis



Image Courtesy © Panagiotis Voumvakis and Kostas Kapareliotis

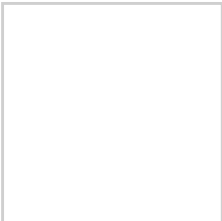


Image Courtesy © Panagiotis Voumvakis and Kostas Kapareliotis

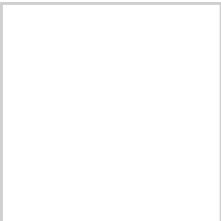


Image Courtesy © Panagiotis Voumvakis and Kostas Kapareliotis

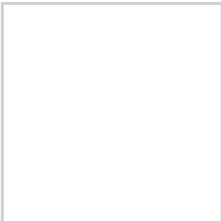


Image Courtesy © Panagiotis Voumvakis and Kostas Kapareliotis



Image Courtesy © Panagiotis Voumvakis and Kostas Kapareliotis

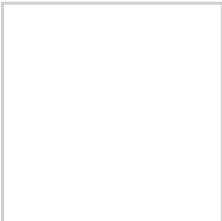


Image Courtesy © Panagiotis Voumvakis and Kostas Kapareliotis

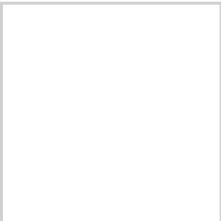


Image Courtesy © Panagiotis Voumvakis and Kostas Kapareliotis

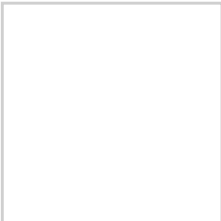


Image Courtesy © PALY architects

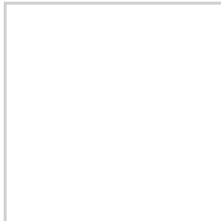


Image Courtesy © PALY architects

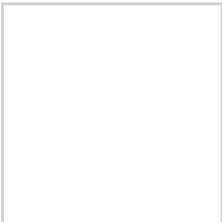


Image Courtesy © PALY architects

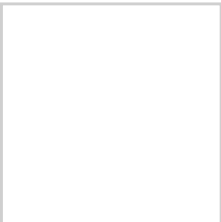


Image Courtesy © PALY architects

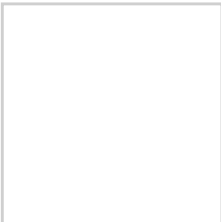


Image Courtesy © PALY architects

Share this:



Like this: