

Velvet Café is on a busy pedestrian street with a large number of other cafés and bars. It unfolds over three levels – the basement accommodates preparation areas, offices and toilets; the ground floor has a seating area, bar and DJ area; and the first level provides extra seating.

The aim was to create a vibrant environment that would attract the younger generation by standing out from the rest of the cafés in the area. The composition is based on contrasting materials and colours. Thus cold materials were used for the floors (tiles, grey granite and rusty-brown marble), the equipment (stainless steel) and various elements including the railings (metal and stainless steel). As a contrast, warm colours and materials were used for the furniture (wooden chairs and leather sofas), the bar, the shelves and the DJ area.

A journey through the space is achieved by means of a freestanding metal staircase that leads from the double-volume entrance hall through a wooden link to the wooden first-floor extension. The journey is made more pleasant by different coloured lighting. The café's furnishings, however, are disappointing.

ADDRESS 15 Fokionos Negri Street, Kypseli

CLIENT Chrisostomos and Vangelis Tassis

SIZE 220 square metres

COST 70 million drachmas

BUS 022, 622 TROLLEY 3, 13, 14

ACCESS open

Nikos Lykoudis, Ismeni Papaspiliopoulou 1993

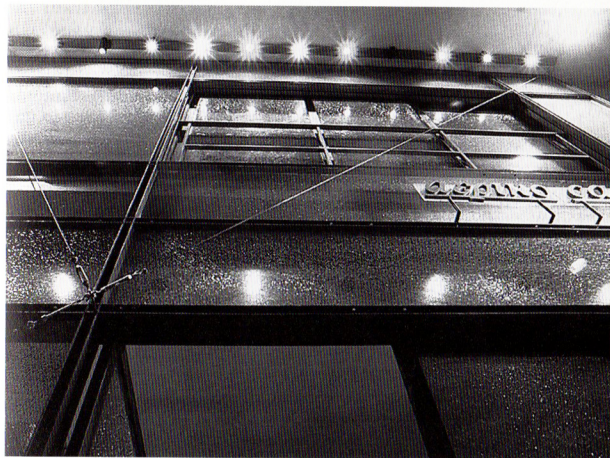


On one of the busiest pedestrian streets, this slick café/bar is on two levels, with two separate bars, a seating area on each level and a DJ space on the ground floor. The mood of the café is set by the juxtaposition of contrasting materials and colours: the hardness of marble and steel co-exists with the warmth of wood, the roughness of plaster counterbalances the smoothness of stucco antico, and rough grey marble emphasises the smooth curves of the orange roof.

Coloured lights add another dimension to the café's mood. Six neon lights shine through glass holes in the ceiling, brightening the ground floor. In the evening, a specially lit metal façade, with crystal treated to give a shattered-glass effect, creates countless shades of colour and adds an air of mystery.

ADDRESS 25 Fokionos Negri Street, Kypseli
 CLIENT Chrisostomos and Vangelis Tassis
 SIZE 200 square metres
 COST 60 million drachmas
 BUS 622 TROLLEY 3, 13, 14
 ACCESS open

Nikos Lykoudis, Ismeni Papaspiliopoulou 1994

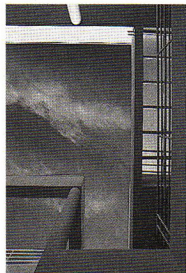


Nikos Lykoudis, Ismeni Papaspiliopoulou 1994

Goumas residence

The site accommodates three houses on two levels, arranged in an L-shape with its corner facing north. The outer side of this arrangement, clad with a greyish-white marble, has a minimum amount of openings and provides protection for the swimming pool and garden. All three buildings, which gradually change in height and width, enjoy the view towards the garden through the large glazed openings that dominate the inner side of the L.

Each of the three homes has a kitchen, a living room and two bathrooms on the ground floor, and three bedrooms, two bathrooms and a seating area on the first floor. Shared auxiliary spaces, garages and a gym are in the basement. All rooms are painted white; floors on the lower levels are covered with grey granite, those on the upper levels with oak.



ADDRESS 7 Orfeos and Pentelis
Street, Kefalari, Kifisia
CLIENTS Maria and Leonidas Goumas
ENGINEERS George Sifakis (civil),
George Christofides (mechanical)
SIZE 1583 square metres (all three)
COST 800 million drachmas
BUS 509, 526, 550
ACCESS none

Nikos Lykoudis, Ismeni Papaspiliopoulou 1991



Kifisia, Kefalari, Politeia